

veribox

high speed, in-line product labelling validation



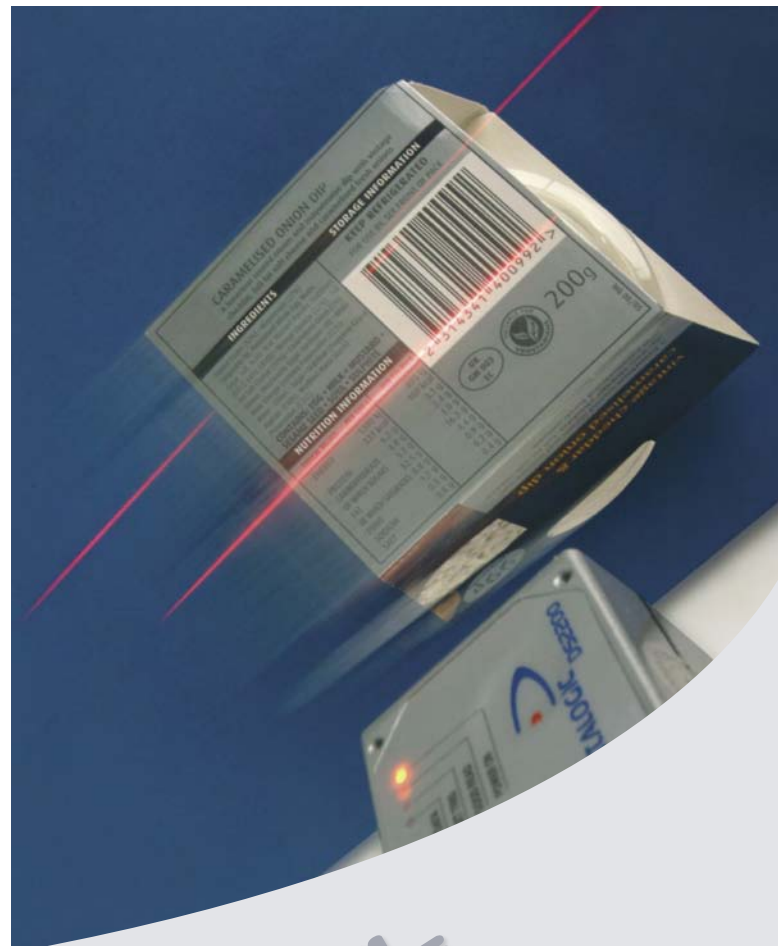
DATASCAN



The VeriBox is a breakthrough in production line product validation. Developed specifically for high speed production lines, the VeriBox can check the bar code of each individual product directly after the labelling process without slowing line speeds or adding an extra step.

From paper labels to printed products, the VeriBox checks each bar code conforms to the planned production batch and instantly detects misapplied or incorrect labelling at source.

With compact, high performance bar code reader and dedicated controller, the VeriBox is easily retro-fitted to existing production lines or incorporated as part of new plants. It is perfectly suited to high speed processes such as canning and bottling lines, from food and drink to pharmaceuticals and household products.





veribox VB500

The cost effective option in product and label validation.

This is the ideal system if space is at a premium and yet the VB500 will guarantee 100% product and label validation and stop the line instantly should it detect a wrong code.

Dimensions:
320 (w) x 220 (H) x 200 (D) mm

Power Supply
24-volt dc

- Diagnostic interface options**
- Green, White, Red diagnostic LED indicators as standard
 - Audible warning buzzer (85dB) as standard
 - Integrated Red LED beacon, 120dB sounder diagnostic pillar optional

- Teach Mode Facilities**
- Teach mode and fault reset is available in a choice between key switches or push buttons

- Operating Mode**
- Validation Mode (wrong read only) An action of your choice can be activated via a volt free contact, on scanning an incorrect code.
 - Combined Validation Mode (wrong read and no read combined) using a single signal. An action of your choice can be activated via a volt free contact, on scanning a wrong code or the system being unable to read a code at all.

Actions include:
Audible Buzzer - Latched error

- Connectivity**
- Volt-free contact user interface
 - 25 way & 9 way connector block for bar code scanner connection

- Compatibility**
- Compatible with most Datalogic 1000, 2000, 4000, 6000 series USS devices

- Max number of scans/min**
- Dependent on scanner option chosen



veribox VB1000

Having the ability to distinguish between a “no-read” and a “wrong-read” to enable you to take different actions in some applications is vital.

The VB1000 enables you to decide what action, ranging from latched error to automatic reject mechanism (no-reads only), should be taken when the system detects a “no read” or a “wrong read”.

Dimensions:
320 (w) x 420 (H) x 200 (D) mm

Power Supply
240-volt ac or 24-volt dc

- Diagnostic interface options**
- Green, White, Red diagnostic LED indicators as standard
 - Audible warning buzzer (85dB) as standard
 - Integrated Red LED beacon, 120dB sounder diagnostic pillar optional

- Teach Mode Facilities**
- Teach mode and fault reset is available in a choice of key switches or push buttons

- Operating Mode**
- Advanced Validation Mode (wrong read and consecutive no read) using multiple signals. An action of your choice for wrong reads is activated and a separate action is activated on being unable to read a code at all.
 - Customer configurable consecutive no-read settings

Actions include:
Audible Buzzer - Latched Error - Reject Mechanism via interface

- Connectivity**
- Multiple volt-free contact user interface
 - User defined no read digital 24 volt dc pulse for reject mechanism interfacing
 - 25 way & 9 way connector block for bar code scanner connection

- Compatibility**
- Compatible with most Datalogic 1000, 2000, 4000, 6000 series USS devices

- Max number of scans/min**
- Dependent on scanner option





Complete with all the functionality of the VB500 and VB1000, the VB3000 offers an advanced remote teach mode interface.

Teach the VB3000 with no manual intervention via the remote host network, enabling you to teach new codes 24/7 with no member of staff needed. Alternatively use the cordless hand held scanner to scan an individual code prior to the line starting.

Dimensions:

420 (w) x 520 (H) x 250 (D) mm

Power Supply

240-volt ac or 24-volt dc

Diagnostic interface options

- Audible warning buzzer (85dB) as standard.
- Green, Red diagnostic LED indicators as standard
- Integrated Red LED beacon, 120dB sounder diagnostic pillar optional
- Touch screen diagnostic multi function display / user interface

Teach Mode Facilities

- Automatic host teach mode function using network interface
- Teach mode via cordless RF hand held device for manual teach mode

Operating Mode

- Advanced Validation Mode (wrong read and consecutive no read) using multiple signals. An action of your choice for wrong reads is activated and a separate action is activated on being unable to read a code at all.
- Customer configurable consecutive no-read setting

Actions include:

Audible Buzzer - Latched Error - Reject Mechanism via interface

Connectivity

- Multiple 24 volt dc digital user interface
- User defined no read digital 24 volt dc pulse for reject mechanism interfacing
- 25 way connector block for bar code scanner connection

Network Interface

- Remote teach mode via cordless RF hand held device
- Remote host network teach mode via Ethernet TCP/IP connection as standard
- User specified remote host network teach mode via industrial fieldbus (ProfiBus, DeviceNet, MUX32 etc) is optional

Compatibility

- Compatible with most Datalogic 1000, 2000, 4000, 6000 series USS devices

Max number of scans/min

- 300 products



VB500, VB1000 & VB3000

Accessories

Cable extension for scanner
4m as standard, longer cables available on request

Optional trigger switch for bar code scanner available

Option on trigger, diffused or polarised Retro



VB500



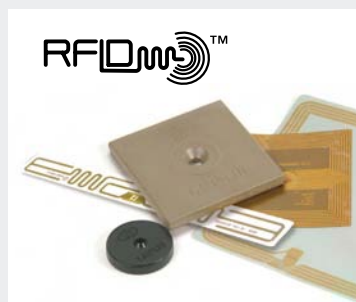
VB1000



VB3000

Key Features		VB500	VB1000	VB3000
Power Supply	24 volt dc supply voltage	✓	✓	✓
	240 volt ac supply voltage	○	✓	✓
Diagnostic Interface	Green, White, Red diagnostic LED indicators	✓	✓	○
	Audible warning buzzer	✓	✓	✓
	Green, Red diagnostic LED indicators	○	○	✓
	Touch screen diagnostic multi-function display / user interface	○	○	✓
	Integrated Red LED beacon, 120dB sounder diagnostic pillar	●	●	●
Teach Mode	Teach mode and fault reset key switches	✓	✓	○
	Teach mode and fault reset push buttons	●	●	○
	Automatic host teach mode function	○	○	✓
	Teach mode via cordless RF hand held device	○	○	✓
Operating Mode	Validation Mode (wrong read only)	✓	○	○
	Combined Validation Mode (wrong read and no read combined) using a single signal	●	○	○
	Advanced Validation Mode (wrong read, no read, consecutive no read) using multiple signals	○	✓	✓
Connectivity	Volt-free contact user interface	✓	○	○
	Multiple volt-free contact user interface	○	✓	○
	Multiple 24 volt dc digital user interface	○	○	✓
	User defined no read digital 24 volt dc pulse for reject mechanism interfacing	○	✓	✓
Network Interface	Remote teach mode via cordless RF hand held device	○	○	✓
	Remote host network teach mode via Ethernet TCP/IP connection	○	○	✓
	User specified remote host network teach mode via industrial fieldbus (Profibus, DeviceNet, MUX32 etc)	○	○	●
Compatibility	Compatible with most Datalogic 1000, 2000, 4000, 6000 series USS devices	✓	✓	✓

Key ✓ Standard feature ● Optional feature ○ Not available



DataScan Systems Limited
 DataScan House, Harris Business Park, Stoke Prior,
 Bromsgrove, Worcestershire B60 4BD
 Telephone +44 (0)1527 839010
 Facsimile +44 (0)1527 839011
 E-mail info@datascansystems.com
 Website www.datascansystems.com